

How-To

Install Sidelight Sashes

Functional Area: Production
Work Center: Field Service

Posting Date: 6/10/2014
Author: Mike Beyerl

After the installation of your Entry Door System is complete, and you have checked that the unit is plumb and square it is time to install your sidelights or direct set glass. **READ** all instruction before starting and as always think safety first. Use the proper tools and wear safety glasses to protect your eyes.

Parts and Equipment needed: Review the sidelight sashes for damage and color correctness, do not install sashes if there are any problems.

Parts: sidelight sashes (Figure 1) – wood quarter round, aluminum exterior stop. (Figure 2) These parts are all shipped together.



Figure 1 Sidelights

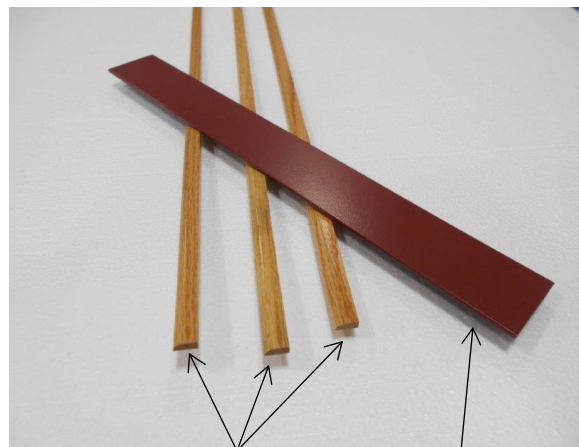


Figure 2 Wood Quarter Round – Aluminum Ext. Stop

Equipment: clear silicone caulk – caulk gun – soft paper towels – rubber squeegee (about the width of your thumb) – brad nails (hand driven or power nailer) – tape measure – pencil – a spray bottle of window cleaner with ammonia – miter saw.

Step 1: Parts preparation. Review the opening to be sure it is free from dirt and debris. Working on the interior of the unit, test fit the sashes by inserting the sidelight sash into the shoe (Figure 3) at the bottom and pushing the top into the opening. There should be a 1/8” to 3/16” margin around the sash on both sides and top. After you are satisfied that the sashes fit properly into the opening precut your wood quarter round trim that will be used to secure the sashes in place. **DO NOT NAIL QUARTER ROUND.** Make sure that you cut each leg to fit into a tight 90° corner in all four corners. (Figure 4)

How-To

Install Sidelight Sashes



Figure 3 Shoe



Figure 4 Miters should be tight

Step 2: Glaze the opening. Remove the wood quarter round and the sash from the opening. Locate the rabbet (Figure 5) of the mull post and outside jamb leg with the saw kerf in it – this is the surface that you will “glaze” your sash to. Apply a bead of clear silicone caulk approximately 1/4” in width (about the width of a pencil) to the entire rabbet and shoe. (Figure 6)



Figure 5 Rabbet

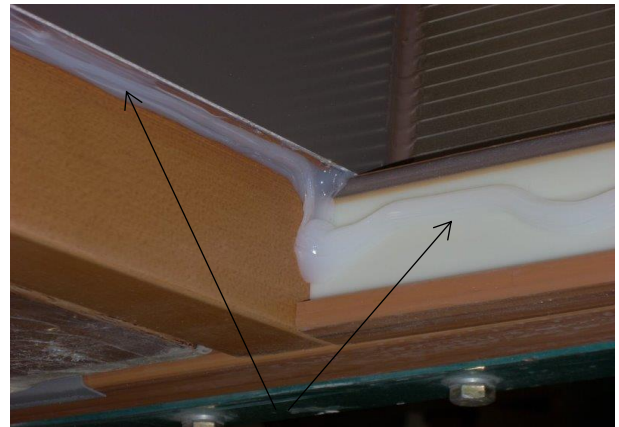


Figure 6 Caulk

Step 3: Set the sashes. Set your sidelight sash into the opening, place the bottom of the sash into the shoe and push the top in. (Figure 7). Push the sash into the bead of caulk evenly and firmly all the way around; caulk should squeeze out of the exterior side of the sash around the entire perimeter where the sash meets the jamb. Position the quarter round and brad nail it into place; this will secure the sash in place (Figure 8). Nails should be 8 – 10 inches apart.

How-To

Install Sidelight Sashes



Figure 7 Insert the bottom of the sash first

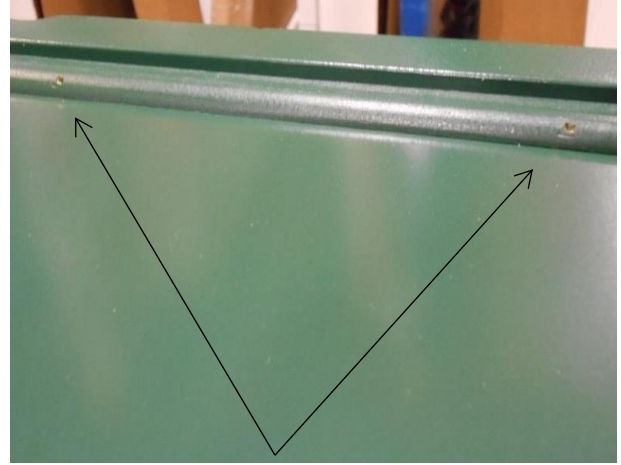


Figure 8 Nail every 8 – 10 inches

Step 4: Clean up. Working from the exterior of the unit, spray a generous amount of window cleaner on all caulk that has squeezed out (Figure 9). This will prevent the caulk from sticking to anything else during the clean up. Use a small squeegee to pull the bead of caulk off of the visual seam between jamb parts and sash. After pulling off the bead of squeeze-out caulk, use a soft cotton rag or soft paper toweling to clean up the window cleaner.



Figure 9 Clean up caulk squeeze out

Step 5: Install Exterior Stop. Working from the exterior of the unit, test fit the aluminum stop between the mull post and the jamb leg. The stop should sit directly on the sill and cover the shoe and the bottom portion of the sidelight. Caulk the back of the stop prior to setting it in place (Figure 10), caulk the perimeter of the stop with a thin bead of clear silicone (Figure 11). Do not squeegee

How-To

Install Sidelight Sashes

this bead of caulk off. This stop is meant to be an aesthetic finish seam between the sash and the sill, but it also will serve as a second line of defense against water and air infiltration.



Figure 10 Caulk back of stop

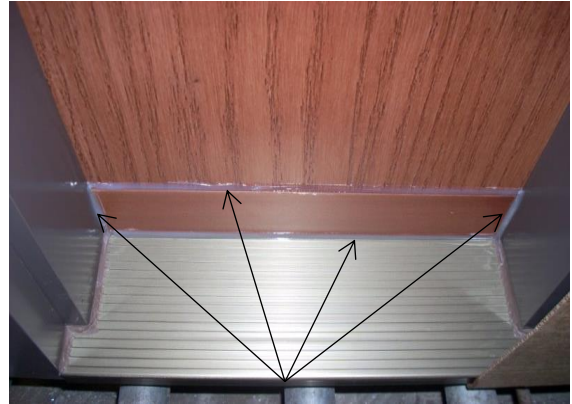


Figure 11 Small bead of caulk to seal

Note: Use these instructions for installation of Direct Set Glass sidelights. Interior wood stop will be thicker.